

COLONIAL[®] GAS WATER SERIES CGWA-Series II

Designed for residential and small commercial applications with approved chimney.

INTEGRATED BOILER CONTROL

Temperature control, relay, and ignition functions in a single module. Includes additional circulator output for a second heating zone or an indirect water heater

- ★ Cast iron heat exchanger
- ★ Boiler easily field convertible to left side piping
- ★ Built-in rear draft diverter to fit low spaces
- ★ Controls located inside the jacket and easily accessible from front of boiler.
- ★ Eight sizes from 38 to 280 MBH

Limited Lifetime Warranty



PROUDLY MADE IN THE USA



COLONIAL® GAS WATER SERIES CGWA-SERIES II

TECHNICAL SPECIFICATIONS

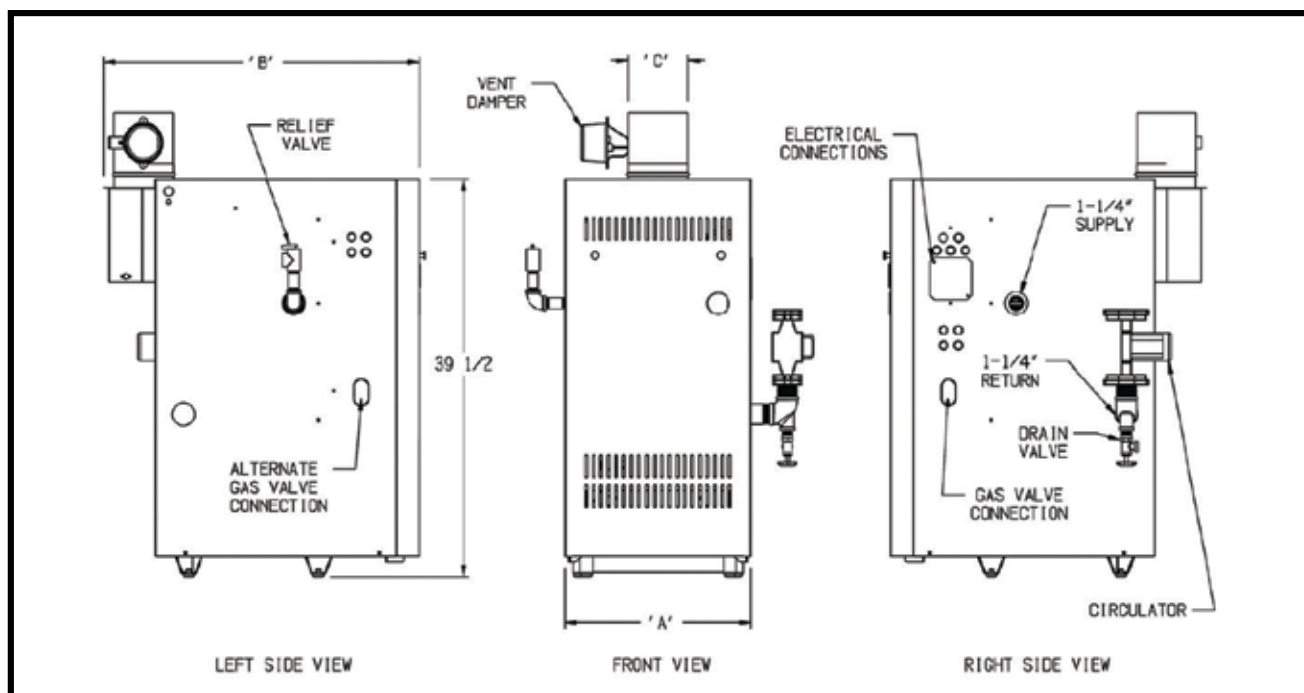
NATIONAL MODEL NUMBER	NO. OF SECTIONS	NATURAL AND LP GAS				DIMENSIONS (IN.)			SHIPPING WEIGHT (LBS.)
		INPUT (MBH)	HEATING CAPACITY (MBH)	AHRI NET RATING WATER (MBH)	AFUE (%)	'A'	'B'	'C'	
CGWA-38-S2	2	38	32	28	83.0	9-3/4	31-1/2	4	234
CGWA-70-S2	3	70	58	50	83.5	12-7/8	31-1/2	4	284
CGWA-105-S2	4	105	87	76	83.7	15-3/8	31-1/2	5	334
CGWA-140-S2	5	140	117	102	83.6	18-1/2	31-1/2	6	384
CGWA-175-S2	6	175	146	127	83.5	21-1/2	31-3/4	7	434
CGWA-210-S2	7	210	175	152	83.4	24-5/8	33-1/2	7	484
CGWA-245-S2	8	245	205	178	83.4	27-5/8	33-1/2	8	533
CGWA-280-S2	9	280	234	203	83.3	30-3/4	33-1/2	8	583

1. Altitudes above 2,000 ft. - ratings should be reduced at a rate of 4% for each 1,000 ft. above sea level (US only)
2. The Net I=B=R Water Ratings are based on a piping and pickup allowance of 1.15.
3. The manufacturer should be consulted before selecting a boiler for installations having unusual piping and pickup requirements, such as intermittent system operation, extensive piping systems, etc.

All residential cast iron boilers include a full one year warranty. A limited, lifetime warranty is provided for the cast iron heat exchanger.

Additional Features/Benefits

- Available with natural or LP gas
- Designed for installation on combustible floors
- Stack Damper; Rollout Switch; Blocked Vent Switch; ASME relief valve (30 PSI)
- Stainless steel burners
- Includes 24V low water cutoff
- Includes two 1-1/4" isolation valves



Specifications are subject to change without notice.

